

2019 TRAVEL TRAILERS

Della Terra





Committed to Making the Future Part of our Present

Environmental sustainability is an important component of our overall business strategy and operation. EAST TO WEST seeks to minimize the impact of our manufacturing process at every stage of production to help reduce, reuse and recycle waste, conserve energy and help preserve our natural resources.

Sustainable manufacturing enhances employee, community and product satisfaction. Our company prides itself on going beyond compliance and using innovation and strategic analysis to reduce our environmental impact. With five guiding principals - Sustainable Manufacturing, Corporate & Social Responsibility, Culture & Values, Quality & Construction and Commitment to Our Customers - every department at EAST TO WEST is committed to making the company's vision a reality.

Our Environmental & Sustainable Manufacturing Practices



RIGOROUS DESIGN STANDARDS AND EFFICIENT USE OF MATERIALS TO BUILD HIGH QUALITY PRODUCTS



COMPANY WIDE WASTE REDUCTION GOALS ENSURE MANUFACTURING SCRAP AND WASTE IS REDUCED, REUSED AND/OR RECYCLED



ENERGY CONSUMPTION AND REDUCTION GOALS AT OUR PLANTS AND FACILITIES



BY RECYCLING, CONSERVING ENERGY AND MINIMIZING THE USE OF MATERIALS, EAST TO WEST IS ABLE TO IMPROVE OUR BOTTOM LINE & PASS THE SAVINGS ON TO YOU



Della Terra

At EAST TO WEST, Inc. we build RVs for every adventure. Della Terra, our line of travel trailers, are designed with your comfort and convenience in mind. From countless features to reliable quality construction, we strive to offer you a product that will make your camping experience enjoyable for the whole family.

Della Terra means "of the Earth" in Italian



Della Terra

27 K2D

81" INTERIOR
CEILING HEIGHT

FULL LENGTH CABINETS IN SLIDE
OUT

SOLID BEDROOM
PRIVACY DOOR

48" WIDE DINETTE

EXTENDED DRAWER
STORAGE UNDER DINETTE

MORTISE & TENON SHAKER
STYLE CABINETS

3-BURNER RANGE
W/ OVEN

DESIGNER COUNTER TOPS & UNDER
MOUNT SINK

UPGRADED DOUBLE
BUNK MATS & UPPER
BUNK WINDOW

SPACIOUS
PANTRY

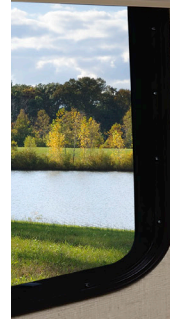
LARGE DINETTE
PICTURE WINDOW

FLUSH FLOOR
SLIDE OUT

Della Terra FEATURES



**LARGE SPACIOUS
PANTRY**



**72" X 80" KING BED W/ 9" INNERSPRING MATTRESS
& DELUXE FITTED BEDSPREAD**



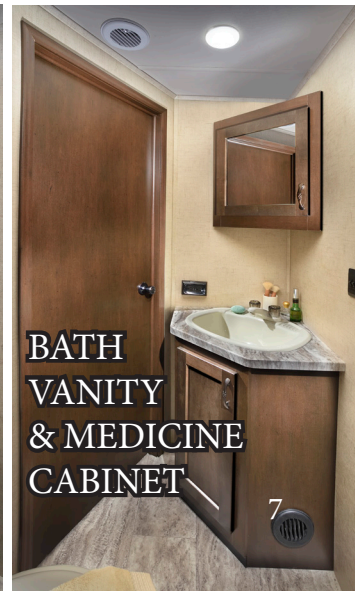
**EXTENDED DRAWER
STORAGE UNDER
DINETTE**



**MAXXAIR® BATHROOM
EXHAUST FAN**

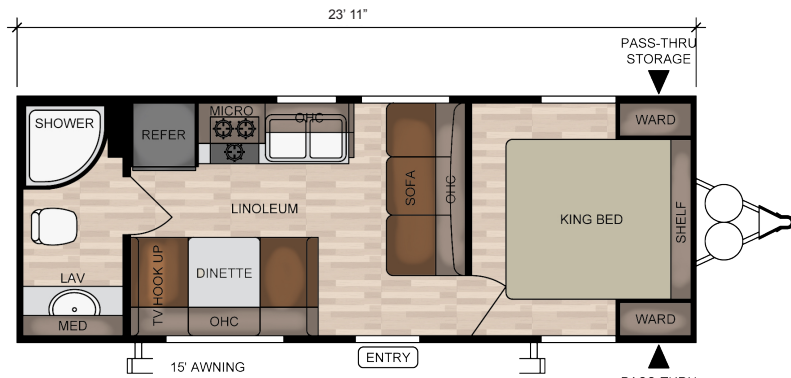


**ASB TUB
SURROUND &
FOOT FLUSH
TOILET**

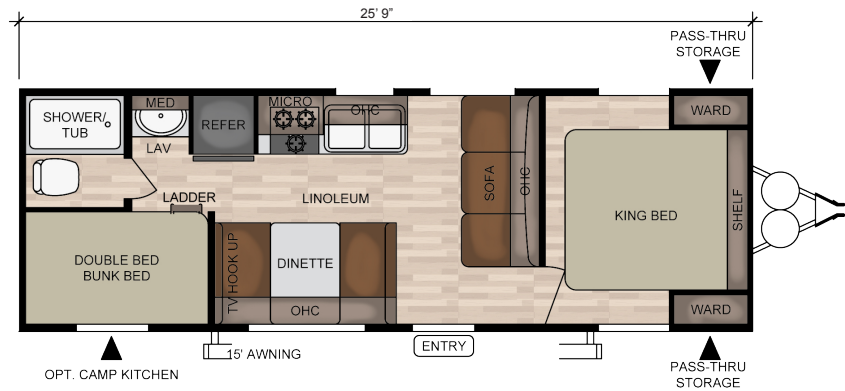


**BATH
VANITY
& MEDICINE
CABINET**

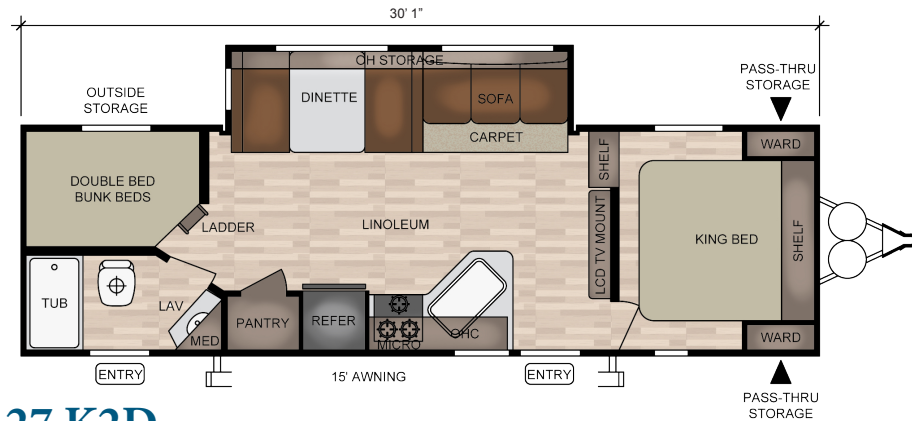




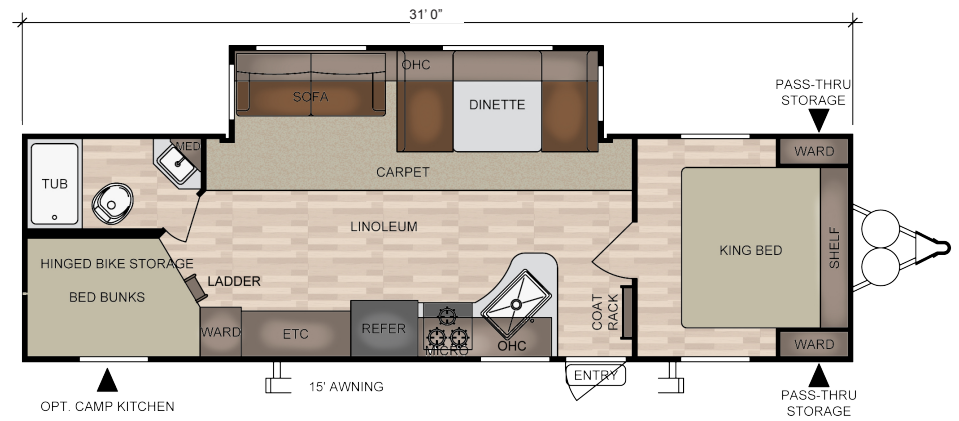
25 KRB



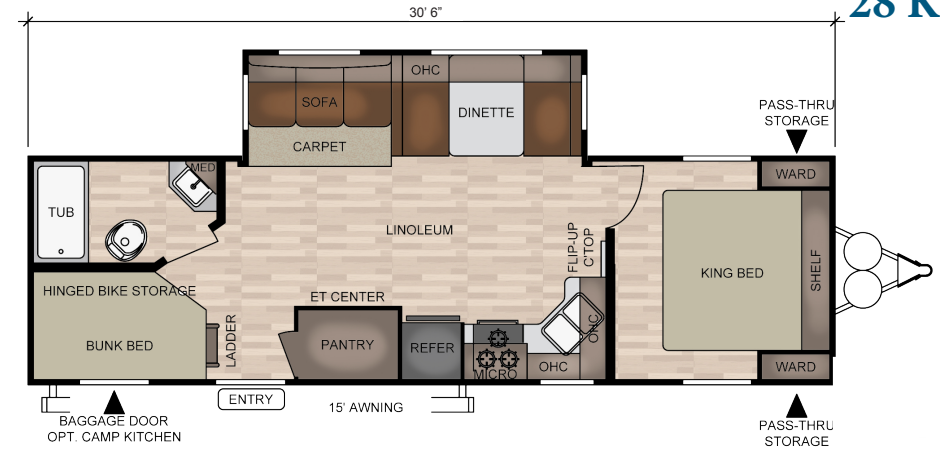
27 KNS



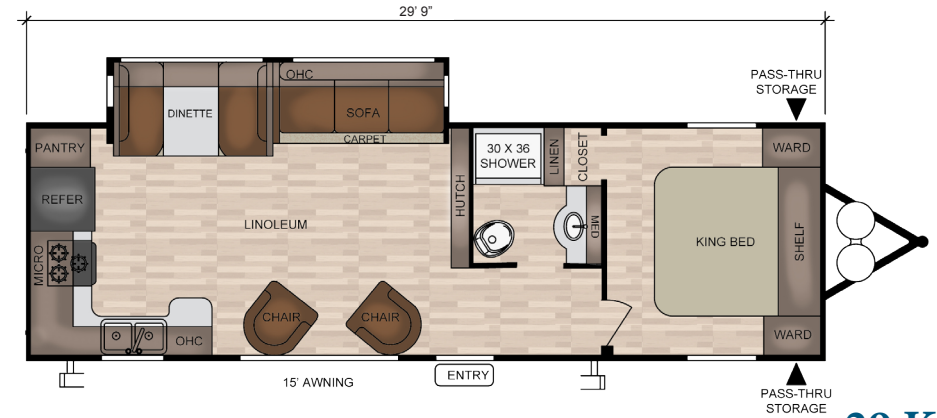
27 K2D



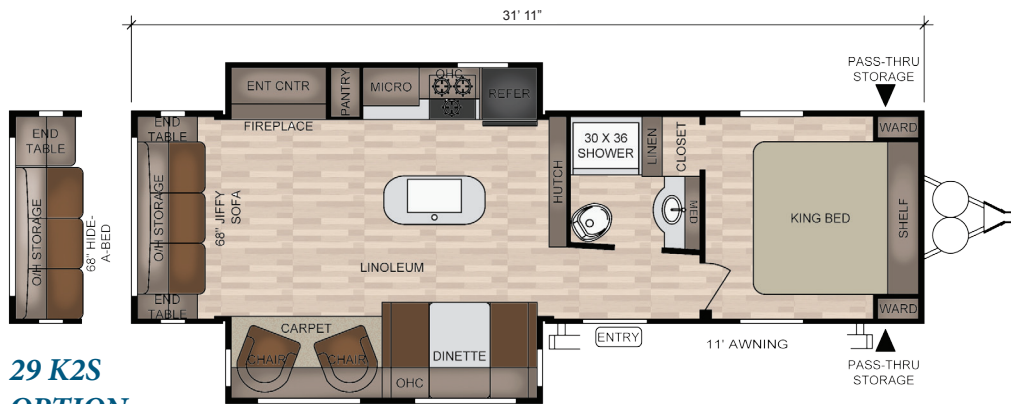
28 KBS



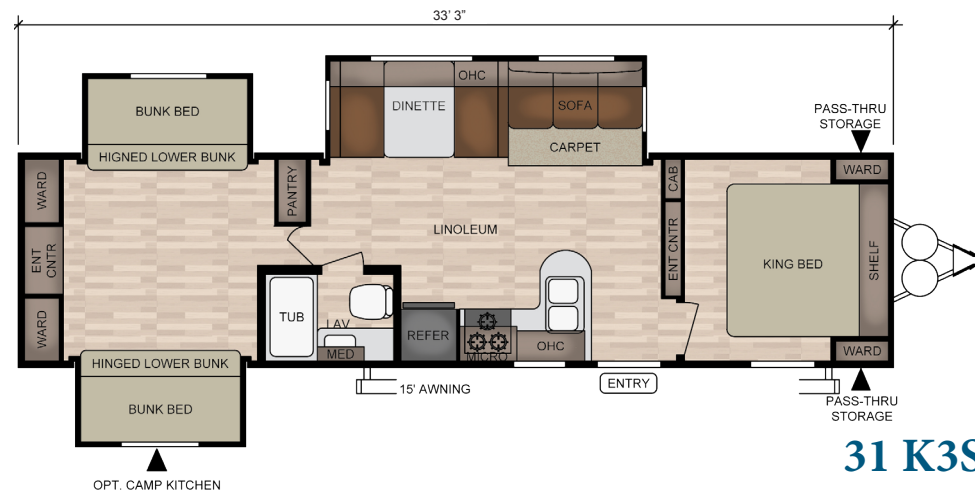
28 KRK



29 KRB



29 K2S
OPTION



29 K2S

31 K3S



FLOORPLANS & SPECIFICATIONS

FLOORPLAN LEGEND

CAB	CABINET
ENT CNTR	ENTERTAINMENT CENTER
LAV	BATHROOM SINK
MED	MEDICINE CABINET
MICRO	MICROWAVE
OHC	OVERHEAD CABINET
REFER	REFRIGERATOR
WARD	WARDROBE

MODELS	DIMENSIONS				WEIGHT (LBS.)			TANKS (GALS.)			AWNING
Floor Plan	Box Length	Exterior Width	Exterior Height	Interior Height	Unloaded Vehicle Weight* (UVW)	Dry Hitch Weight	Cargo Carrying Capacity (CCC)	Fresh Water Capacity	Grey Waste Water Capacity	Black Waste Water Capacity	Size
25 KRB	23'11"	96"	10'8"	81"	4973	565	2509	40	40	40	15'
27 KNS	25'9"	96"	10'8"	81"	5319	715	2351	40	40	40	15'
27 K2D	30'1"	96"	11'0"	81"	6835	785	2750	40	80	40	15'
28 KBS	31'0"	96"	11'0"	81"	6952	945	2571	40	80	40	15'
28 KRD	30'6"	96"	11'2"	81"	6898	780	2266	40	80	40	15'
29 KRK	29'9"	96"	11'2"	81"	6835	987	2935	40	80	40	15'
29 K2S	31'11"	96"	11'3"	81"	8178	936	1558	40	80	40	11'
31 K3S	33'3"	96"	11'3"	81"	8745	896	2134	40	80	40	15'

SPECIFICATION DEFINITIONS

*Weight represents an average on how most units are built excluding additional options

GVWR (Gross Vehicle Weight Rating) - is the maximum permissible weight of the unit when fully loaded. It includes all weights, inclusive of all fluids, cargo, optional equipment and accessories. For safety and product performance do NOT exceed the GVWR.

GAWR (Gross Axle Weight Rating) - is the maximum permissible weight, including cargo, fluids, optional equipment and accessories that can be safely supported by a combination of all axles.

UVW (Unloaded Vehicle Weight)* - is the typical weight of the unit as manufactured at the factory. It includes all weight at the unit's axle(s) and tongue or pin and LP Gas. The UVW does not include cargo, fresh potable water, additional optional equipment or dealer installed accessories. **Estimated Average based on standard build optional equipment.*

CCC (Cargo Carrying Capacity)** - is the amount of weight available for fresh potable water, cargo, additional optional equipment and accessories. CCC is equal to GVWR minus UVW. Available CCC should accommodate fresh potable water (8.3 lbs per gallon). Before filling the fresh water tank, empty the black and gray tanks to provide for more cargo capacity. ***Estimated average based on standard build optional equipment*

Each Forest River RV is weighed at the manufacturing facility prior to shipping. A label identifying the unloaded vehicle weight of the actual unit and the cargo carrying capacity is applied to every Forest River RV prior to leaving our facilities. The load capacity of your unit is designated by weight, not by volume, so you cannot necessarily use all available space when loading your unit.

CONSTRUCTION & EXTERIOR

- 5/8" TONGUE & GROOVE PLYWOOD FLOOR DECKING
- ONE-PIECE SEAMLESS SUPERFLEX® ROOF W/ 12 YEAR WARRANTY
- EXTRA LARGE FULL PASS THROUGH STORAGE (PER FLOOR PLAN)
- COLD CRACK AND MILDEW RESISTANT VINYL PATIO AWNING
- TINTED GLASS WINDOWS
- METAL FRAMED 30" SMOOTH RADIUS CORNER FIBERGLASS MAIN ENTRY
- CHAMBERED CHASSIS
- 16 GAL. PER HOUR GAS/ELECTRIC QUICK RECOVERY DSI WATER HEATER
- 2" WALL CONSTRUCTION, 16" ON CENTER
- R-7 FIBERGLASS INSULATION THROUGHOUT
- 13 PLY CROSS MICRO-LAMINATED BEAM HEADER ABOVE SLIDE OUT
- TRIPLE SEAL SLIDE OUT SYSTEM
- AERODYNAMIC FRONT RADIUS PROFILE
- SMOOTH ALUMINIUM FRONT CAP
- ONE-PIECE SLIP RESISTANT LINOLEUM FLOORING
- 20# LP BOTTLES (2) WITH COVER

INTERIOR

- MORTISE AND TENON SHAKER STYLE CABINETS
- RESIDENTIAL UNDER MOUNT KITCHEN SINK
- MICROWAVE
- 12-VOLT EXHAUST FAN AND LIGHT
- SHELVING IN OVERHEAD KITCHEN CABINETS
- WOOD DRAWERS W/ FURNITURE GRADE PLYWOOD SIDES
- FULL EXTENSION BALL BEARING DRAWER GLIDES
- UPGRADED RESIDENTIAL FURNITURE
- BOOTH DINETTE W/ LARGE PICTURE WINDOW
- TV & CABLE PREP IN LIVING ROOM AND BEDROOM
- 30K BTU SUBURBAN® FORCED AIR DSI FURNACE W/ DIGITAL THERMOSTAT
- IN-FLOOR DUCTED HEAT
- STRUT LIFTED STORAGE UNDER MASTER BED
- INCREASED FOOT SPACE AT THE FOOT OF BED
- SOLID BEDROOM PRIVACY DOORS

SECURITY & SAFETY

- LP LEAK, SMOKE AND CARBON MONOXIDE DETECTORS
- FIRE EXTINGUISHER
- WELDED HEAVY DUTY SAFETY CHAINS
- ELECTRIC BRAKES (ALL WHEELS)
- GFI RECEPTACLES
- ANSI 119.2 CERTIFIED
- MEETS ALL NATIONAL HIGHWAY ADMINISTRATIVE SPECIFICATIONS
- RVIA APPROVED PRODUCT

MANDATORY OPTIONS

- AUTOMOTIVE DEPOSITION COATING
- KING BED - 72" X 80"
- KING BED - 9" INNERSPRING MATTRESS
- ENCLOSED UNDERBELLY
- ENCLOSED TANKS
- EXTREME DELUXE KING SIZE FITTED BEDSPREAD
- FLUSH FLOOR SLIDE OUTS
- DOMETIC® DOUBLE DOOR 8' CUBIC REFRIGERATOR

PACKAGE 1

- 81" CEILING HEIGHT
- HIGH DEFINITION/AMPLIFIED TV ANTENNA
- TWO MARINE GRADE EXTERIOR SPEAKERS
- CABLE/SATELLITE READY
- USB CHARGING STATION
- BLACK TANK FLUSH
- OUTSIDE SHOWER
- GREEN PACKAGE - LED MUSHROOM LIGHTS
- DETACHABLE POWER CORD
- NIGHT SHADE
- FURRIOR® BACKUP CAMERA READY
- DESIGNER COUNTER TOPS
- STABILIZER JACKS
- FOOT FLUSH TOILET
- DUCTED 15,000 BTU ROOF AIR CONDITIONER W/ QUICK COOL
- RESIDENTIAL DESIGNER FAUCET
- PASS THROUGH STORAGE ON MOST

PACKAGE 2

- WATER HEATER BYPASS
- MAXX AIR® BATHROOM EXHAUST FAN
- ASB TUB SURROUND
- RADIAL TIRES
- POWER AWNING
- LED AWNING LIGHTS
- 3-BURNER RANGE WITH OVEN IN PLACE OF COOK TOP
- TRIPLE ENTRY STEP
- SOLAR PREP
- EXTERIOR LED LIGHTS
- INTERIOR LED LIGHTS
- POWER TONGUE JACK
- EXTERIOR SWING ARM ENTRY ASSIST HANDLE
- FULL LENGTH CABINET IN SLIDE OUT
- CD/DVD AND AM/FM BLUETOOTH STEREO
- WARDROBE IN BEDROOM W/A
- SOLID BEDROOM DOOR W/A
- TINTED WINDOWS
- UPGRADED BUNK MATS
- UPPER BUNK WINDOW
- R.V.Q. QUICK DISCONNECT W/A

OPTIONS

- SPARE TIRE & CARRIER
- LARGE LED TV
- MEDIUM LED TV
- OPTIONAL CAMP KITCHEN
- MAXX AIR® BATHROOM EXHAUST FAN (FREE)
- DUCTED 15,000 BTU ROOF AIR CONDITIONER W/ QUICK COOL (FREE)





Our company takes pride in our five guiding principles and our corporate philosophy which focuses on people working together to create high quality, value added products that deliver the ultimate RV experience.

SUSTAINABLE MANUFACTURING

An important objective to our strategy and operations is to implement economically sound manufacturing processes to reduce/ recycle waste & conserve energy and natural resources.

CORPORATE & SOCIAL RESPONSIBILITY

We foster a business environment in which we focus on and practice:

- Ethical Labor Practices
- Teamwork
- Philanthropy
- Volunteering

CULTURE & VALUES

We are a forward thinking company committed to fostering a culture of teamwork. By being transparent, we encourage our employees to think outside the box and make a difference!

QUALITY & CONSTRUCTION

Our team takes pride in each unit we build. Our manufacturing standards and point to point inspections ensure each EAST TO WEST brand is built to the same quality specifications every time.

OUR COMMITMENT

We strive to provide the highest quality products at the best possible price to our customers. We invite you to be a part of the EAST TO WEST family and we look forward to exceeding your expectations!



Learn More
Scan this barcode using a QR Reader on your smart phone to learn more about Forest River.



A Berkshire Hathaway company.

24/7 EMERGENCY ROADSIDE ASSISTANCE

For a worry-free ownership experience Forest River includes one year of Coach-Net RV Technical & Roadside Assistance with each RV purchase. Whether new to the RV lifestyle or an experienced RV enthusiast, Forest River owners have 24/7 access to technical, operational and emergency road service coverage throughout the US & Canada. Coach-Net's fast, dependable service is just a phone call away.

Coach-Net®
RV Technical & Roadside Assistance

CUSTOMER SATISFACTION



www.ForestRiverBuyLocal.com

FREE MEMBERSHIP
to Forest River Owners' Group



2901 CR 7N | Elkhart, IN 46514 | 574.264.6664 | www.EastToWestRV.com

© 2018 East To West, Inc. a Division of Forest River, Inc., a Berkshire Hathaway Company. All Rights Reserved.



#GOEASTTOWEST